



Lift & Turn / Plug & Chain

- * 1-1/2" exposed drain & overflow
- * Overflow tube is 18"
- * Waste shoe tube is 12"
- * Bottom tail piece is 6"
- * High polished finish
- * CSA approved

This model comes with a Plug & Chain and Lift & Turn option

Model

5599CSA
5593CSA
5594CSA
5598CSA

Finish

Chrome
Brushed Nickel
Polished Nickel
Oil Rubbed Bronze

Replacement Parts see Pg.59/60



Toe Touch Pop Up

- * 1-1/2" exposed drain & overflow
- * Overflow tube is 18"
- * Waste shoe tube is 18"
- * Bottom tail piece is 5"
- * High polished finish

Model

SH1900POPCP
SH1900POPBN

Finish

Chrome
Brushed Nickel

Replacement Parts see Pg.59/60



Rotational Overflow Head

Swivel II – Lift & Turn

- * 1-1/2" exposed drain & overflow
- * Overflow tube is 18"
- * Waste shoe tube is 12"
- * Bottom tail piece is 6"

Model

D1CP

Finish

Chrome

Replacement Parts see Pg 59/60



Toe Touch Pop Up

Model #	Finish
SHPOPCP	Chrome
SHPOPBN	Br. Nickel



Top Waste Flange #3

Model #	Finish
WF55CP	Chrome
WF55BN	Br. Nickel



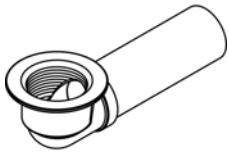
Lift Stop #8

Model #	Finish
L55CP	Chrome
L55BN	Br. Nickel



Rubber Gasket #7

Model #
R55WS



Drain Shoe #2

Model #	Finish
B55CP	Chrome
B55BN	Br. Nickel



1.5" Nuts #9

Model #	Finish
N55CP	Chrome
N55BN	Br. Nickel



Drain Tee #5 (no nuts)

Model #	Finish
FP55CP	Chrome
FP55BN	Br. Nickel



6" Tube #11

Model #	Finish
L55CP	Chrome
L55BN	Br. Nickel



Overflow Tube #1

Model #	Finish
T55CP	Chrome
T55BN	Br. Nickel



Sponge Gasket #6

Model #
R55PL



Face Plate #4

Model #	Finish
FP55CP	Chrome
FP55BN	Br. Nickel



Face Screw #10

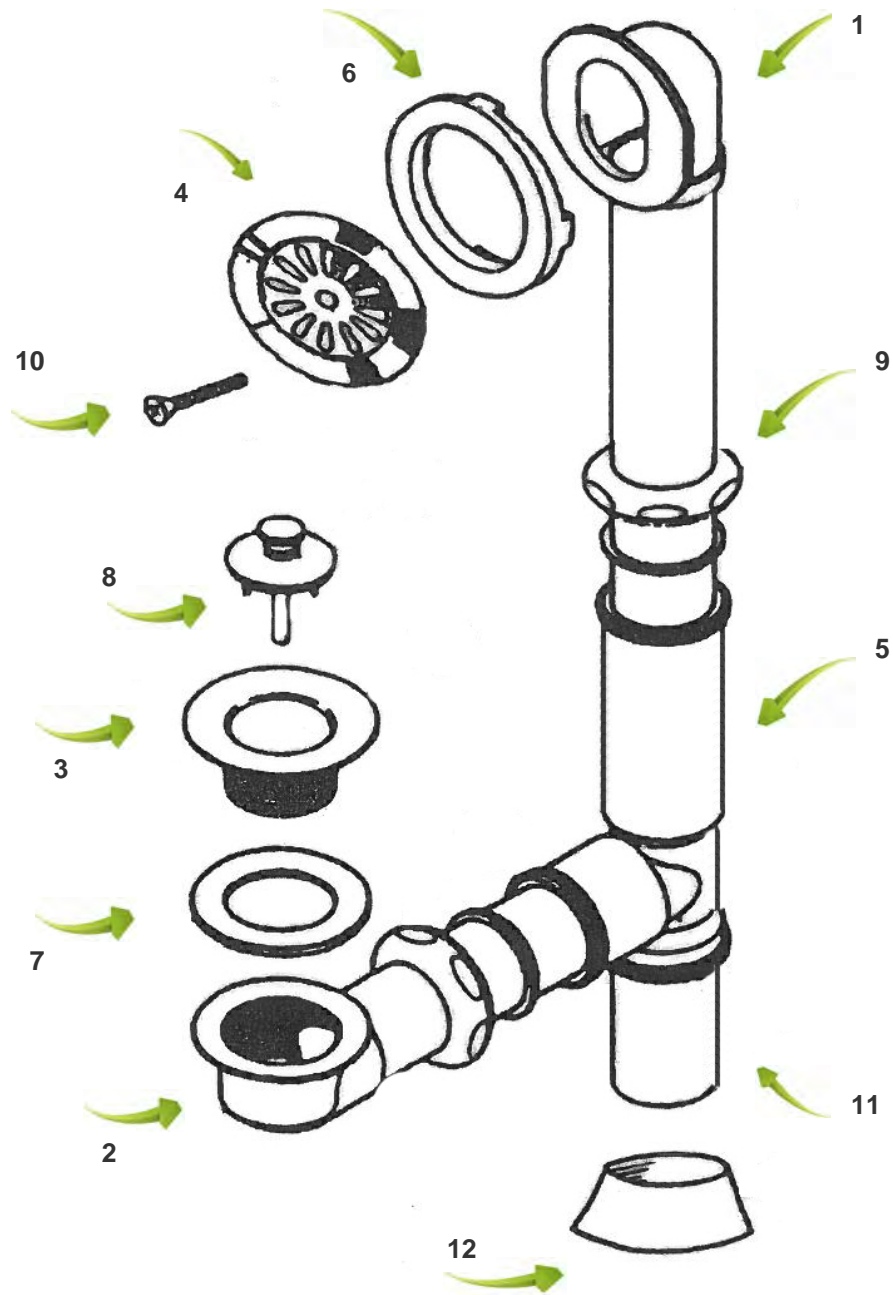
Model #	Finish
S55CP	Chrome
S55BN	Br. Nickel



Floor Escutcheon #12

Model #	Finish
491CP	Chrome
491BN	Br. Nickel

For 5599 Series ' T ' Style Drain & Overflow





31.5"

9650 Floor Risers

Mounting Application:
Freestanding over-the-rim

- * Solid brass 1" OD
- * Overall height: 31.5" (4" sits below floor)
- * Finished exposed height above floor: 27.5"
- * 3/4"M running thread to faucet
- * 1/2"F solder inside at bottom

Can be used for the following series faucets:

Bath Faucets: 400, 701, 722, 800, 850, 2200X, N800
Bath & Shower Kits: P54S, 2195, 2190, 1800, 2800



Model #	Finish
9650	Chrome
9653	Brushed Nickel
9654	Polished Nickel
9658	Oil Rubbed Bronze



Specs:

See page S10 in
SPECS section



31.5"

9670 Floor Risers w/ Shutoffs

Mounting Application:
Freestanding over-the-rim

- * Includes pre installation kit (see page 70-71)
- * Solid brass 1" OD
- * Overall height: 31.5" (4" sits below floor)
- * Finished exposed height above floor: 27.5"
- * 3/4"M running thread to faucet
- * 1/2"F solder inside at bottom

Can be used for the following series faucets:

Bath Faucets: 400, 701, 722, 800, 850, 2200X, N800
Bath & Shower Kits: P54S, 2195, 2190, 1800, 2800



Model #	Finish
9670	Chrome
9673	Brushed Nickel
9674	Polished Nickel
9678	Oil Rubbed Bronze



Specs:

See page S10 in
SPECS section



37.5"

9670M Floor Risers w/ Shutoffs

Mounting Application:
Freestanding over-the-rim

- * Includes pre installation kit (see page 70-71)
- * Solid brass 1" OD
- * Overall height: 37.5" (4" sits below floor)
- * Finished exposed height above floor: 33.5"
- * 3/4"M running thread to faucet
- * 1/2"F solder inside at bottom

Can be used for the following series faucets:

Bath Faucets: 400, 701, 722, 800, 850, 2200X, N800
Bath & Shower Kits: P54S, 2195, 2190, 1800, 2800



Model #	Finish
9670M	Chrome
9673M	Brushed Nickel
9674M	Polished Nickel
9678M	Oil Rubbed Bronze



Specs:

See page S10 in
SPECS section



37.5



9670MEX Risers w/ Shutoffs (7" faucet extension to clear wide rim tubs)

Mounting Application:
Freestanding over-the-rim

- * Includes pre installation kit (see page 70-71)
- * Solid brass 1" OD
- * Overall height: 37.5" (4" sits below floor)
- * Finished exposed height above floor: 33.5"
- * 3/4"M running thread to faucet
- * 1/2"F solder inside at bottom

Can be used for the following series faucets:

Bath Faucets: 701, 722, 800, 850, 2200X, N800
Bath & Shower Kits: P54S, 2195, 2190, 1800, 2800

Model #	Finish
9670MEX	Chrome
9673MEX	Brushed Nickel



Specs:

See page S11 in
SPECS section



398 Floor Risers w/ Shutoffs

Mounting Application:
Freestanding over-the-rim

- * Adjustable height: 24.5" – 32"
- * Running thread to faucet
- * Solder inside at bottom
- * Includes wall supports / cut-to-fit adjustable

Can be used for the following series faucets:

Bath Faucets: British, Goose I, Goose II, Spigot
Bath & Shower Kits: CDSH, Spigot, Goose

Model #	Finish
CDSH398CP	Chrome

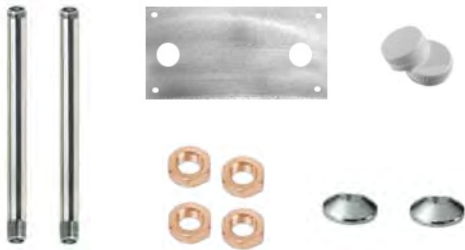
IMPORTANT - Please read before ordering: (for freestanding over-the-rim)

The Pre Installation kit is made up of 2 sections; TOP and BOTTOM. The *bottom* section is all the components that are below the shutoff valve only. The *top* consists of only the top portion of a floor riser tube with the shutoffs. The 2 combined parts will make a complete floor riser tube (complete tubes are also found on page 68-69)

How to order:

- * First, select the BOTTOM portion pre installation tubes.
- * Second, order the corresponding TOP portion tube to the desired height to fit your bathtub.
- * Please note that ALL tubes have 4" threading that will sit below the floor; therefore, where noted "top & bottom" this height is the overall height; the finished exposed height is less 4"

BOTTOM section pre installation tubes:



Kit Includes:

2 x 10" tubes
 1 x 4" x 9" floor plate
 2 x test caps
 2 x escutcheons
 4 x brass flanges

Model

9670CP/K
 9670BN/K
 9670OB/K

Finish

Chrome
 Brushed Nickel
 Oil Rubbed Bronze

TOP section riser tubes:

All tubes below have 7" faucet extensions



20.5" top only / top & bottom = 31.5"

Model

9670CP/R
 9670BN/R
 9670OB/R

Finish

Chrome
 Brushed Nickel
 Oil Rubbed Bronze



20.5" top only / top & bottom = 31.5"

Model

9670CP/R/EX
 9670BN/R/EX

Finish

Chrome
 Brushed Nickel



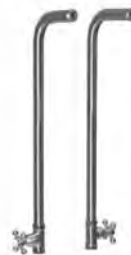
27.5" top only / top & bottom = 37.5"

Model

9670CP/M
 9670BN/M
 9670OB/M

Finish

Chrome
 Brushed Nickel
 Oil Rubbed Bronze



27.5" top only / top & bottom = 37.5"

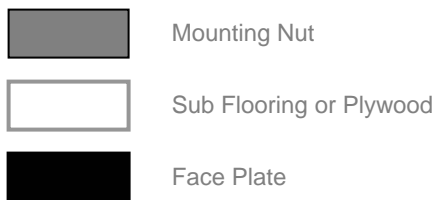
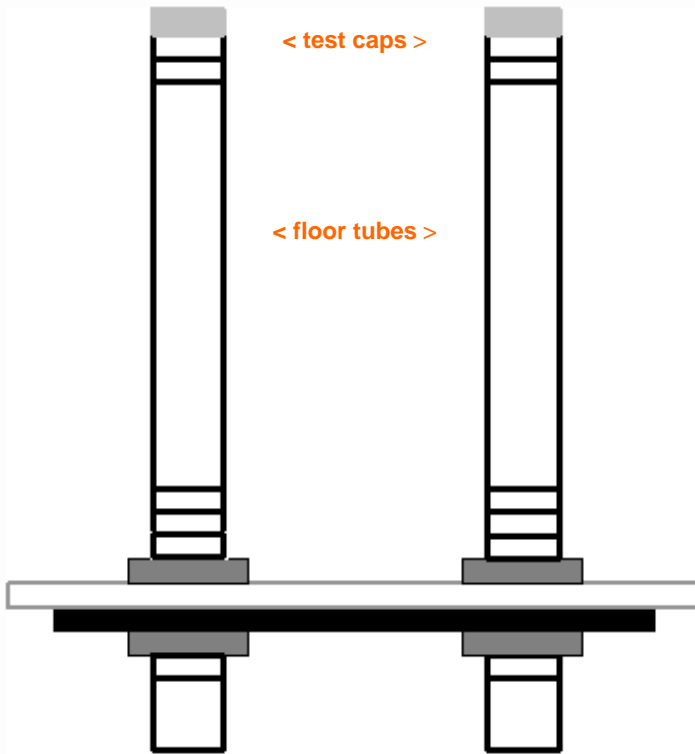
Model

9670CP/M/EX
 9670BN/M/EX

Finish

Chrome
 Brushed Nickel

Installation:



- (a) Face Plate is a template for drilling holes to exact measurements. You may choose to mount face plate to sub-flooring or wherever most convenient for added stability.
- (b) Once Face Plate is mounted or holes have been drilled, take one mounting nut and one tube – slide tube through flooring or plate, take mounting nut under bottom of face plate or floor and thread onto tube. Take second mounting nut and thread on to tube above flooring. Mounting nuts should “sandwich” the tube to flooring.
- (c) Repeat step (b) to other side.
- (d) Sweat on copper water line to bottom of tube.
- (e) Cover mounting nut above floor with Escutcheons.
- (f) Thread on Test Caps onto top of tube and conduct a test run for leaks etc. Once complete, take floor riser tube and place $\frac{3}{4}$ ” washer between pre install tube and floor riser. Thread floor riser onto tube.
- (g) Test again for any leaks etc. Troubleshoot if necessary

Note: All floor riser tubes are tested before being shipped. There should be no leaks, so long as installation is done properly. Any tampering with tubing will result in void warranty.

IMPORTANT:

Test caps are to be used only for testing to see if there are any leaks in the installation. **By no means are the test caps to be left on the tubes unattended as the pressure from the water lines may crack or blow off the caps.** This is solely the responsibility of the installer to follow these instructions. SSSG, nor any of our suppliers, retailers, wholesalers or distributors will NOT be held liable for any damages caused by mistreatment or neglect.



Offset Water Supplies

Mounting Application: For inside tub mount

- * 1/2" OD tubing
- * 24" length
- * Optional 1/2"F & 3/4"F faucet connections
- * 8" centres at floor when on a 3-3/8" faucet mount

Model

5576
5573

Finish

Chrome
Brushed Nickel



Replacement Parts
See page 67



Offset Water Supplies w/ Shutoffs

Mounting Application: For inside tub mount

- * 1/2" OD tubing
- * 30" length
- * 1/2"F faucet connection
- * 3/4"F floor connection
- * 8" centres at floor when on a 3-3/8" faucet mount
- * Shutoffs: 1/2" IPS Female x 1/2" OD Comp.

Model

5576X
5573X
5575X

Finish

Chrome
Brushed Nickel
Matte Bronze



Replacement Parts
See page 67



90° Water Supplies

Mounting Application: For inside tub mount

- * 1/2" OD tubing
- * 24" length
- * 1/2"F faucet connection
- * 90 is 3" off back of tub
- * Floor: on centre with holes in tub

Model

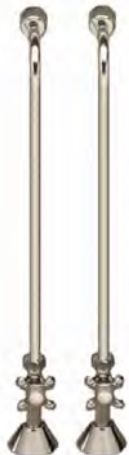
5576ST

Finish

Chrome



Replacement Parts
See page 67



90° Water Supplies w/ Shutoffs

Mounting Application: For inside tub mount

- * 1/2" OD tubing
- * 30" length
- * 1/2"F faucet connection
- * 3/4"F floor connection
- * 90 is 3" off back of tub
- * Floor: on centre with holes in tub
- * Shutoffs: 1/2" IPS Female x 1/2" OD Comp.

Model

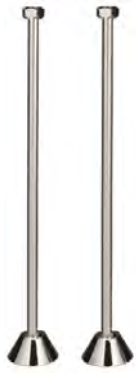
5576STX

Finish

Chrome



Replacement Parts
See page 67



Deck Mount Water Supplies

Mounting Application: Deck of tub

- * 1/2" OD tubing
- * Tubes are 24" length
- * 1/2"F faucet connection

Model #

5476
5473

Finish

Chrome
Brushed Nickel



Replacement Parts
See page 67



Deck Water Supplies w/ Shutoffs

Mounting Application: Deck of tub

- * 1/2" OD tubing
- * Tubes are 30" length
- * 1/2"F faucet connection
- * 3/4"F floor connection
- * Shutoffs: 1/2" IPS Female x 1/2" OD Comp.

Model #

5476X
5473X

Finish

Chrome
Brushed Nickel



Replacement Parts
See page 67



Floor Escutcheons

* For 1" OD tubing

Model #	Finish
800/96FL	Chrome
803/96FL	Brushed Nickel



Supply Tube Floor Flanges

* For water supply tubes with shutoffs

Model #	Finish
CDBF50CP	Chrome
CDBF50BN	Brushed Nickel



Supply Tube Floor Flanges

* For water supply tubes w/out valves

Model #	Finish
CDBF58CP	Chrome
CDBF58BN	Brushed Nickel



Supply Tube Shutoffs

* 1/2"IPS F x 1/2"F Compression

Model #	Finish
CDSH218CP	Chrome
CDSH218BN	Brushed Nickel



3" Supply Tube Nipples

* 1/2"M x 1/2"M

Model #	Finish
N3CP	Chrome
N3BN	Brushed Nickel



Supply Tube Hardware

Size	Model #	Finish
3/4"	34TRIMCP	Chrome
	34TRIM BN	Brushed Nickel
1/2"	12TRIMCP	Chrome
	12TRIM BN	Brushed Nickel



3/4" Brass Floor Nuts

Model #
96FN - (sold per each)

For all finishes, floor riser model series:
9650, 9670, 9670M, 9670MEX



3/4" Fibre Model #
800WAF - (25pcs)

1/2" Fibre Model #
1684 - (25pcs)

1/2" Rubber Model #
1685 - (25pcs)



#19 Bushing

* 3/4"M x 1/2"F
* Threaded inside/outside

Model #
#19