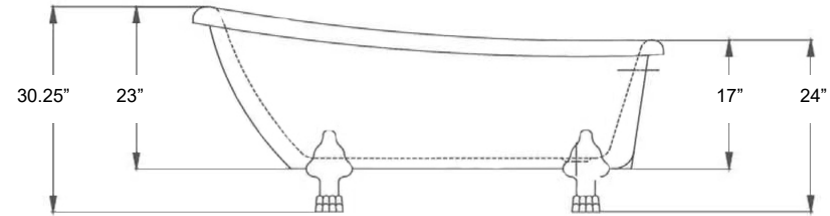
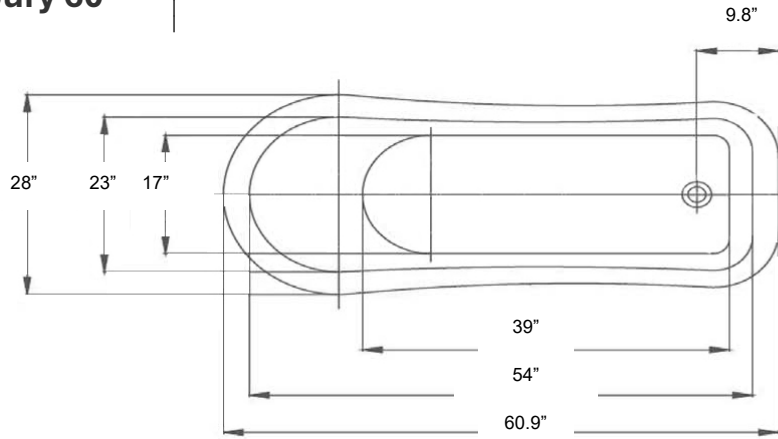


## Newbury 60

All measurements are approximate and may change without notice. We will not be responsible for faulty or improper installation. We strongly recommend having product onsite before installing any hard plumbing or drilling any holes.

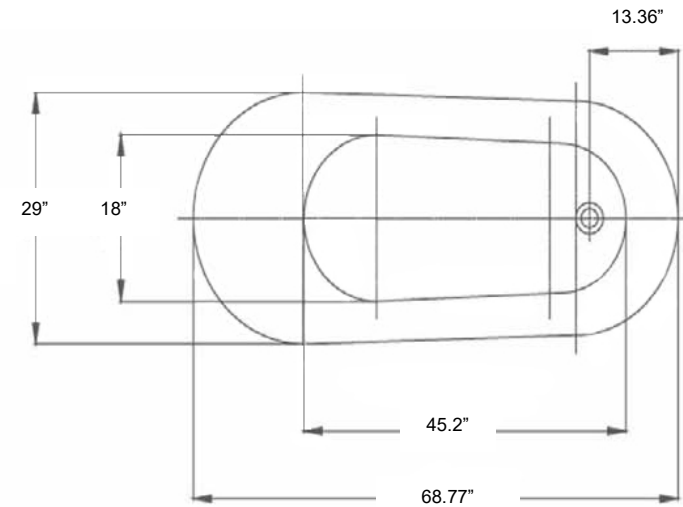
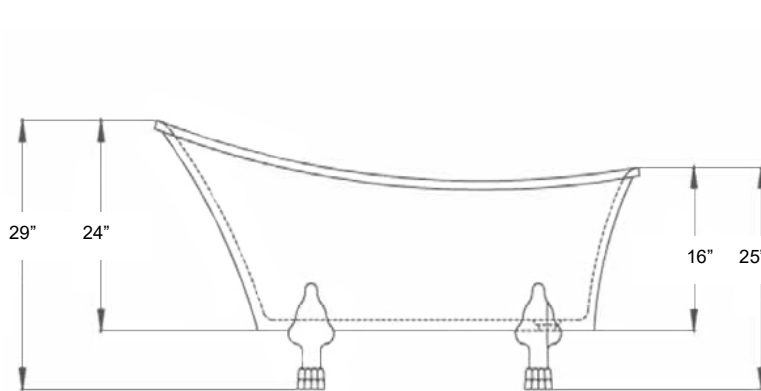


**Overall Specifications:** 60.9"L x 28"W x 30.25 (back) / 24" (low) // **Approximate Weight:** 150 lbs // **Material:** High polished interior / exterior acrylic with reinforced fibreglass

Drain is NOT included // **Faucet application:** freestanding or tiled wall only (holes are not pre-drilled)

## Prestige

All measurements are approximate and may change without notice. We will not be responsible for faulty or improper installation. We strongly recommend having product onsite before installing any hard plumbing or drilling any holes.

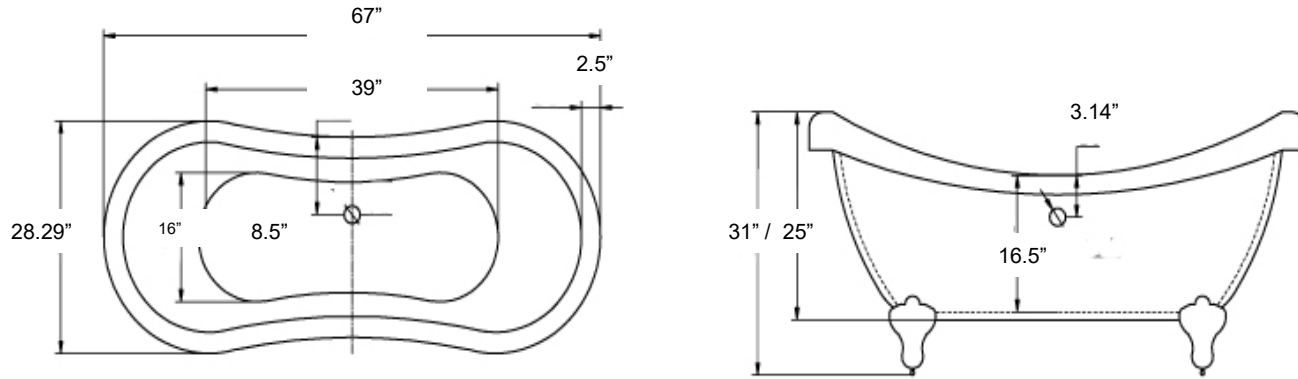


**Overall Specifications:** 68.7"L x 29" (highest) / 25"H (low) // **Approximate Weight:** 150 lbs // **Material:** High polished interior / exterior acrylic with reinforced fibreglass

Drain is NOT included (our D1 series is recommended) // **Faucet application:** freestanding or tiled wall only (holes are not pre-drilled)

# Majesty

All measurements are approximate and may change without notice. We will not be responsible for faulty or improper installation. We strongly recommend having product onsite before installing any hard plumbing or drilling any holes.

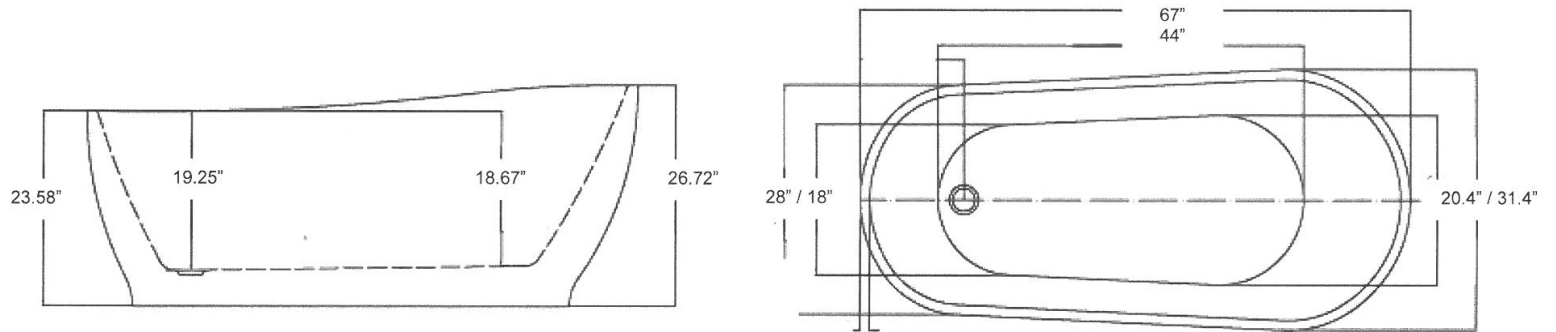


**Overall Specifications:** .67”L x 28.29”W x31”H // **Approximate Weight:** 125 lbs // **Material:** High polished interior / exterior acrylic with reinforced fibreglass

Drain is NOT included // **Faucet application:** freestanding or tiled wall (holes are not pre-drilled)

All measurements are approximate and may change without notice. We will not be responsible for faulty or improper installation. We strongly recommend having product onsite before installing any hard plumbing or drilling any holes.

## Paris

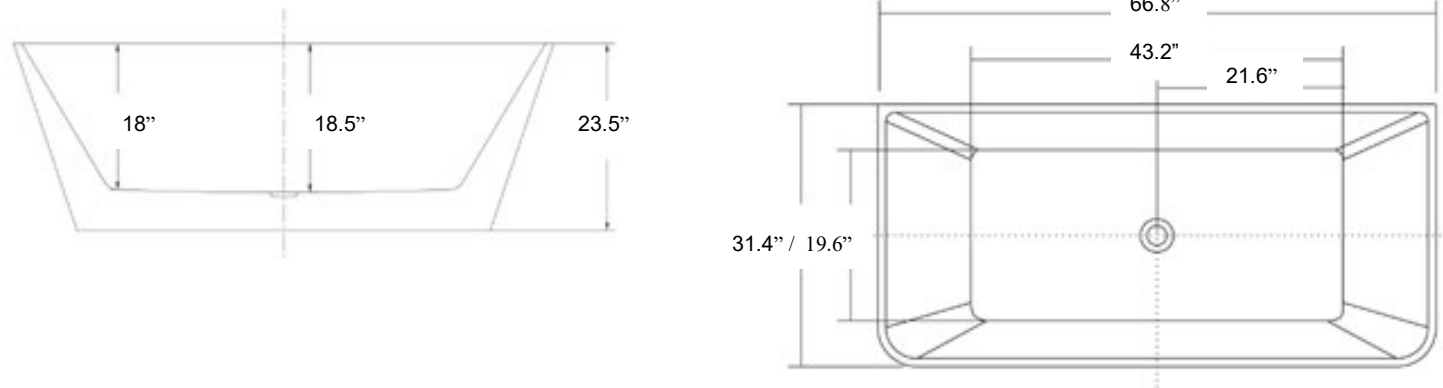


**Overall Specifications:** 67"L x 28/31.4"W x 23.58/26.72"H // **Approximate Weight:** 140 lbs // **Material:** High polished interior / exterior acrylic with reinforced fibreglass

Integrated drain included // Faucet application for FREESTANDING or TILED WALL.

## Bali

All measurements are approximate and may change without notice. We will not be responsible for faulty or improper installation. We strongly recommend having product onsite before installing any hard plumbing or drilling any holes.

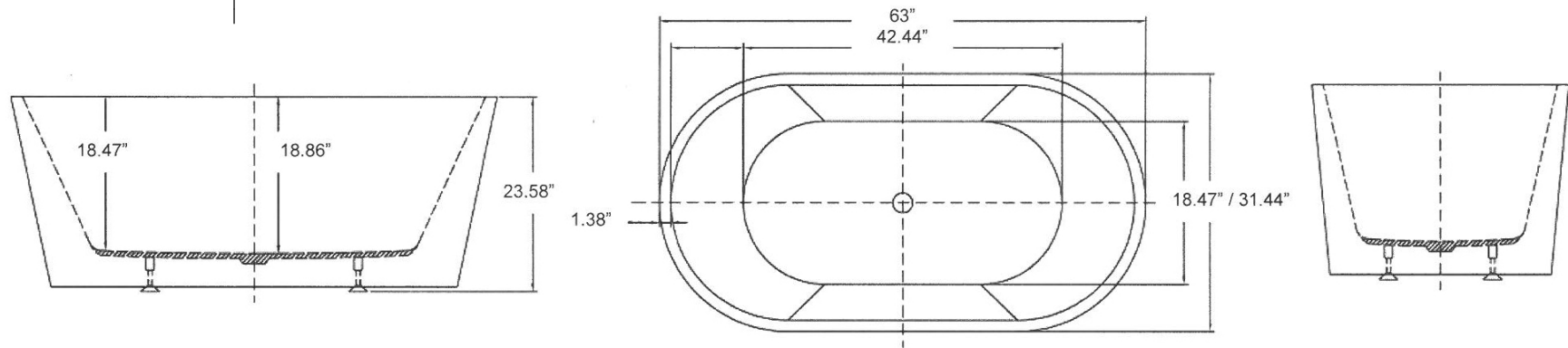


**Overall Specifications:** 66.8"L x 31.4"W x 23.5"H // **Approximate Weight:** 140 lbs // **Material:** High polished interior / exterior acrylic with reinforced fibreglass

Integrated drain included // Faucet application for FREESTANDING or TILED WALL.

## Orient

All measurements are approximate and may change without notice. We will not be responsible for faulty or improper installation. We strongly recommend having product onsite before installing any hard plumbing or drilling any holes.

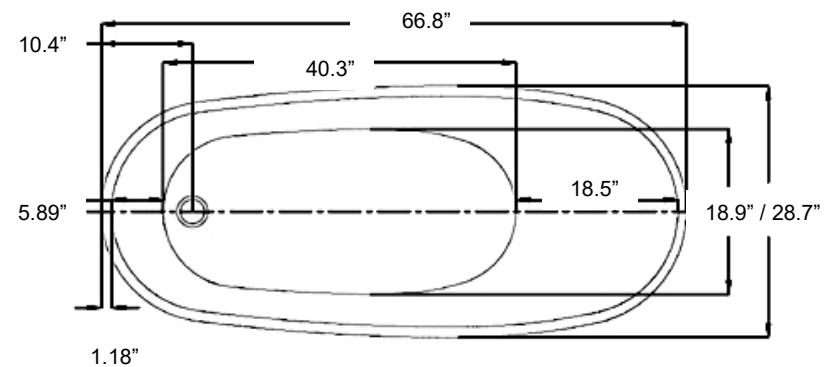
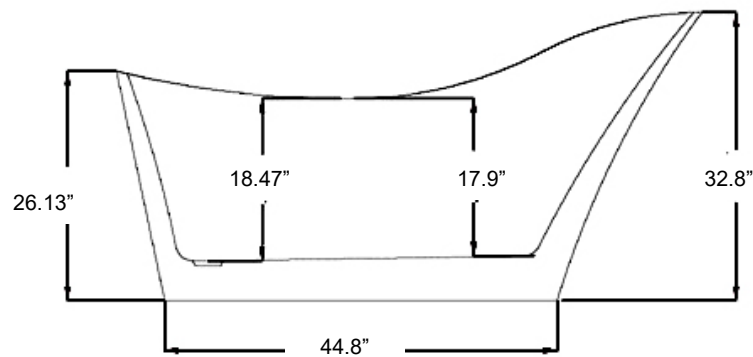


**Overall Specifications:** .63"L x 31.44"W x 23.58"H // **Approximate Weight:** 140 lbs // **Material:** High polished interior / exterior acrylic with reinforced fiberglass

Integrated drain included // Faucet application for FREESTANDING or TILED WALL.

All measurements are approximate and may change without notice. We will not be responsible for faulty or improper installation. We strongly recommend having product onsite before installing any hard plumbing or drilling any holes.

## Napa

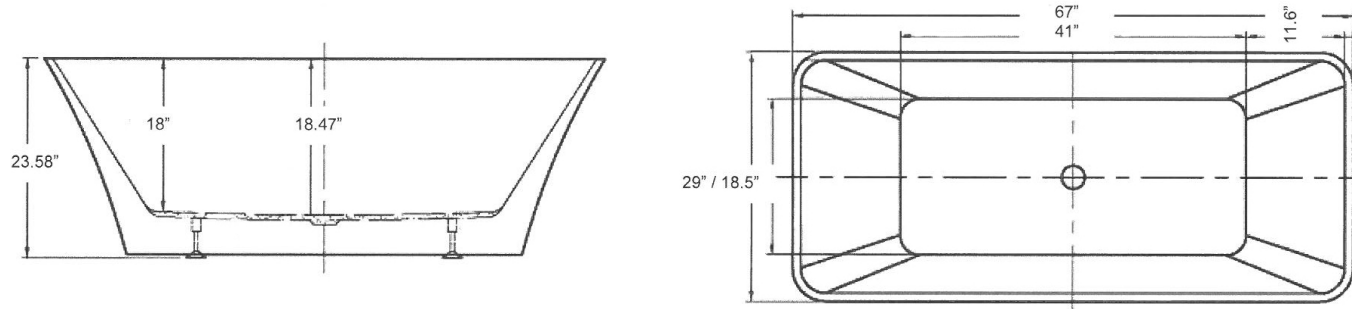


**Overall Specifications:** .66.8"L x 28.7"W x 32.8" / 26.13"H // **Approximate Weight:** 140 lbs // **Material:** High polished interior / exterior acrylic with reinforced fiberglass

Integrated drain included // Faucet application for FREESTANDING or TILED WALL.

## Malibu

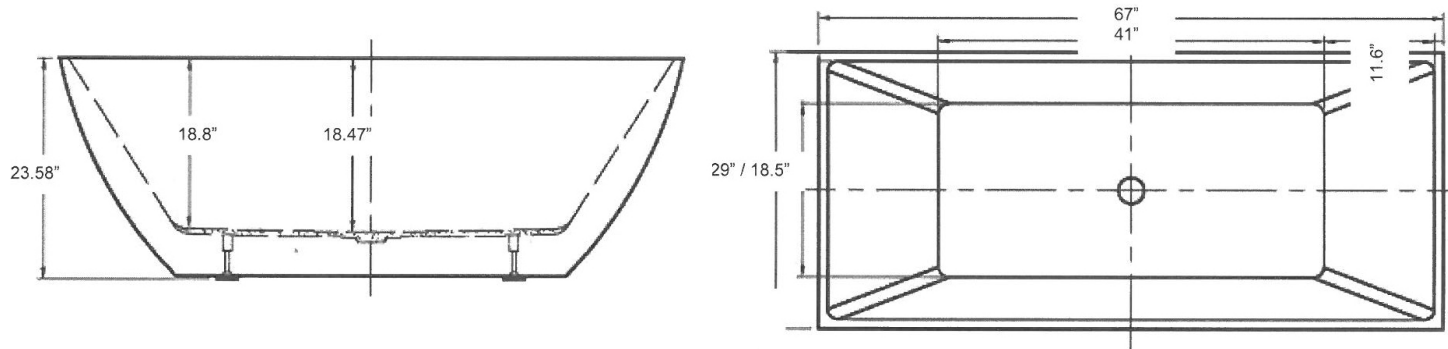
All measurements are approximate and may change without notice. We will not be responsible for faulty or improper installation. We strongly recommend having product onsite before installing any hard plumbing or drilling any holes.



**Overall Specifications:** 67"L x 29"W x 23.58"H // **Approximate Weight:** 140 lbs // **Material:** High polished interior / exterior acrylic with reinforced fibreglass  
Integrated drain included // Faucet application for FREESTANDING or TILED WALL.

All measurements are approximate and may change without notice. We will not be responsible for faulty or improper installation. We strongly recommend having product onsite before installing any hard plumbing or drilling any holes.

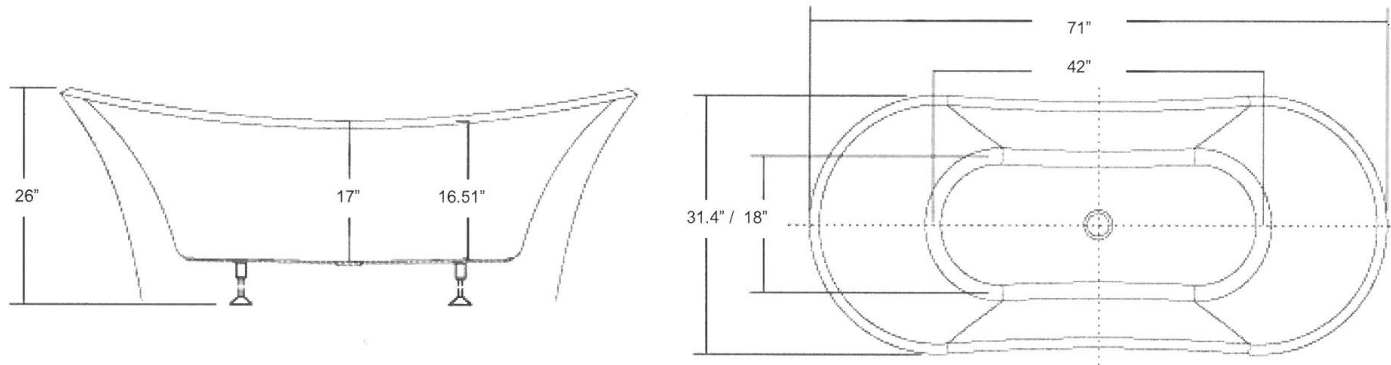
## Maui



**Overall Specifications:** 67"L x 29"W x 23.58"H // **Approximate Weight:** 140 lbs // **Material:** High polished interior / exterior acrylic with reinforced fibreglass  
Integrated drain included // Faucet application for FREESTANDING or TILED WALL.

## Californian

All measurements are approximate and may change without notice. We will not be responsible for faulty or improper installation. We strongly recommend having product onsite before installing any hard plumbing or drilling any holes.

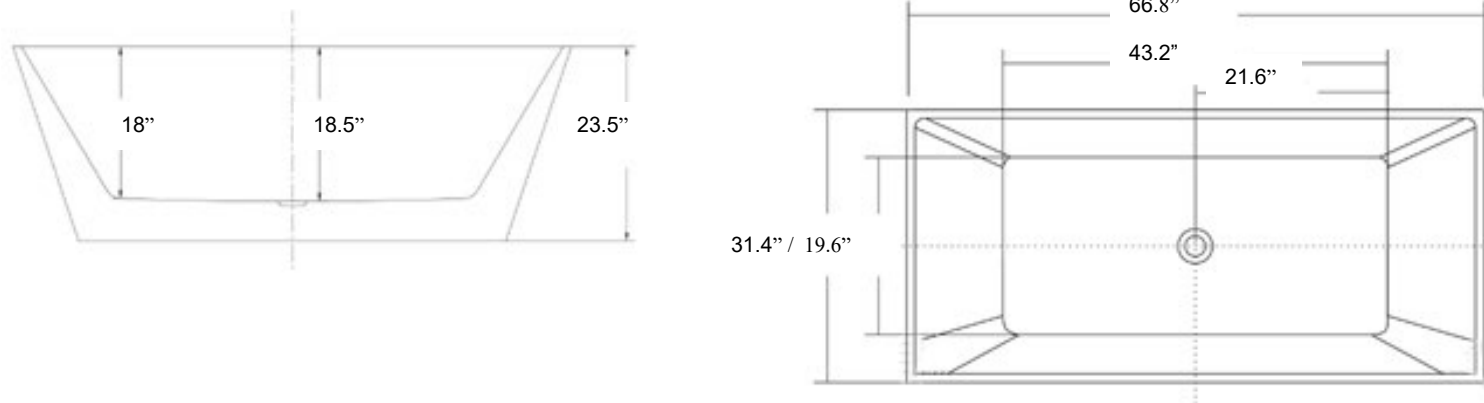


**Overall Specifications:** .71"L x 31.4"W x 26"H // **Approximate Weight:** 140 lbs // **Material:** High polished interior / exterior acrylic with reinforced fibreglass

Integrated drain included // Faucet application for FREESTANDING or TILED WALL.

All measurements are approximate and may change without notice. We will not be responsible for faulty or improper installation. We strongly recommend having product onsite before installing any hard plumbing or drilling any holes.

## Manhattan



**Overall Specifications:** .67"L x 29"W x 23.58"H // **Approximate Weight:** 140 lbs // **Material:** High polished interior / exterior acrylic with reinforced fibreglass

Integrated drain included // Faucet application for FREESTANDING or TILED WALL.